

Distribution Automation

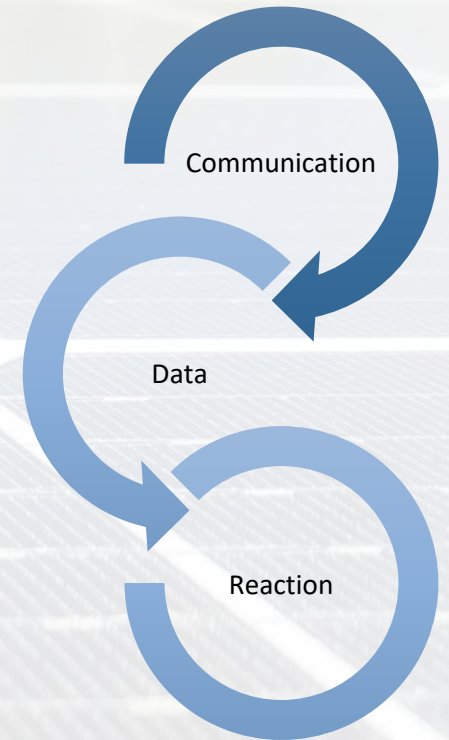
Cora Juczak, Electric Distribution Planning Engineer

Central Hudson Electric Distribution Planning – Smart Grid

What is Distribution Automation?

The process by which distribution-level data is collected, automated, analyzed, and used to control Central Hudson electrical grid functions.

- Communication – Radio, Cellular, Microwave, Fiber
- Data – Collected throughout circuits
- Reaction – To outages, voltage, and power flow changes



Why?

- Implement Conservation Voltage Reduction (CVR) to reduce energy usage
- Fault Location, Isolation, and Service Restoration (FLISR) to reduce the number of outages from a fault
- The grid was not designed for reverse power flow from DER
- To coordinate DER with system infrastructure and controls

“If you can measure it, you can understand it. If you can understand it, you can manage it. If you can manage it, you can improve it”

– Jeff Smith, EPRI Senior Program Manager

How?

1. Distribution Management System (DMS)

- Real time system model
- Integrated Distributed Energy Resources

2. System infrastructure upgrades

- Reduce Losses
- Improve Operational Flexibility

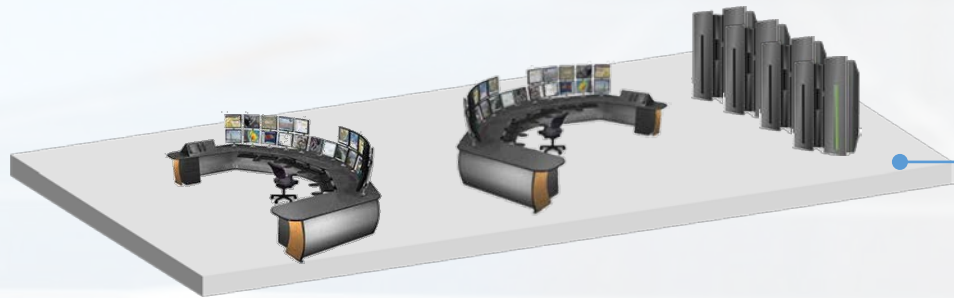
3. Intelligent devices/sensors

- Conservation Voltage Reduction (CVR)
- Fault Location, Isolation, and Service Restoration (FLISR)

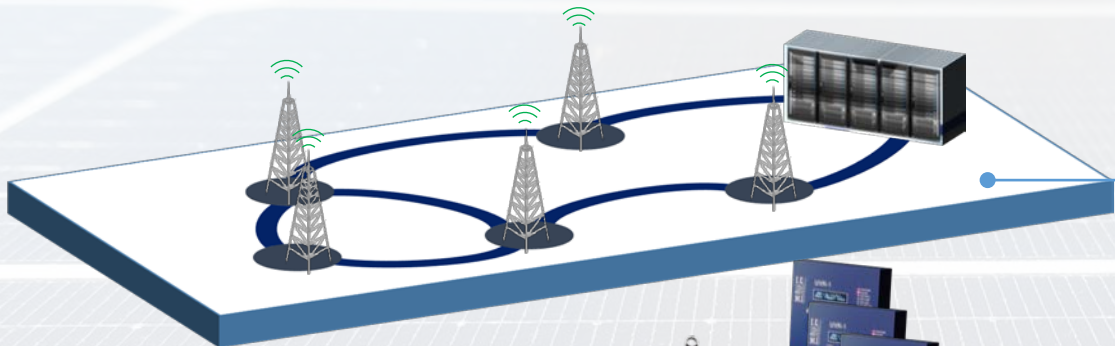
4. Network Strategy

- Communication Mesh Network





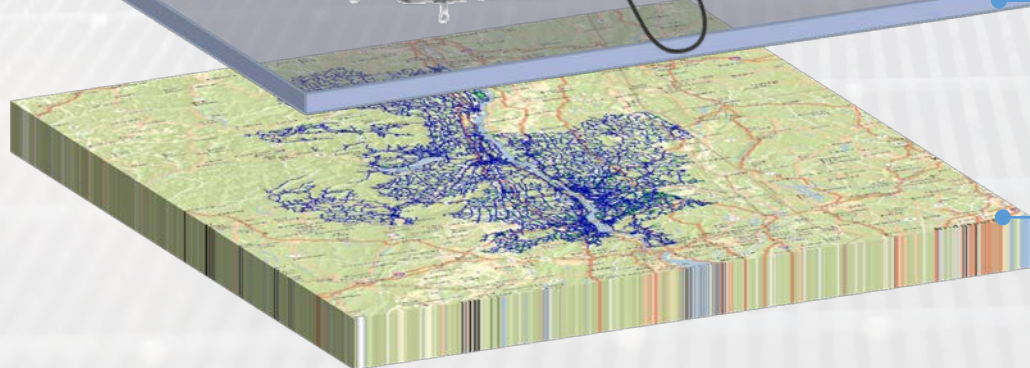
DMS



Network Strategy

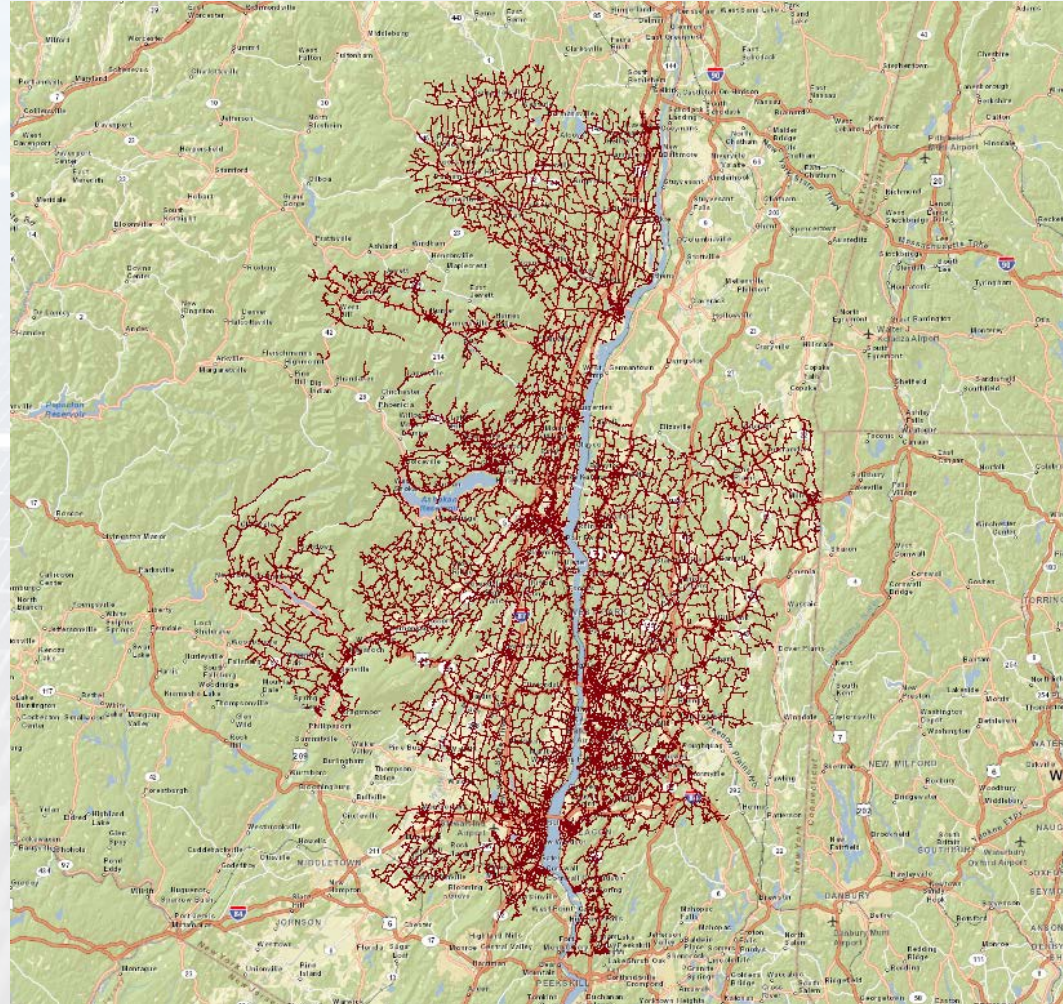


Feeder Intelligence



ESRI GIS

ESRI GIS (Asset Model)



Feeder Intelligence

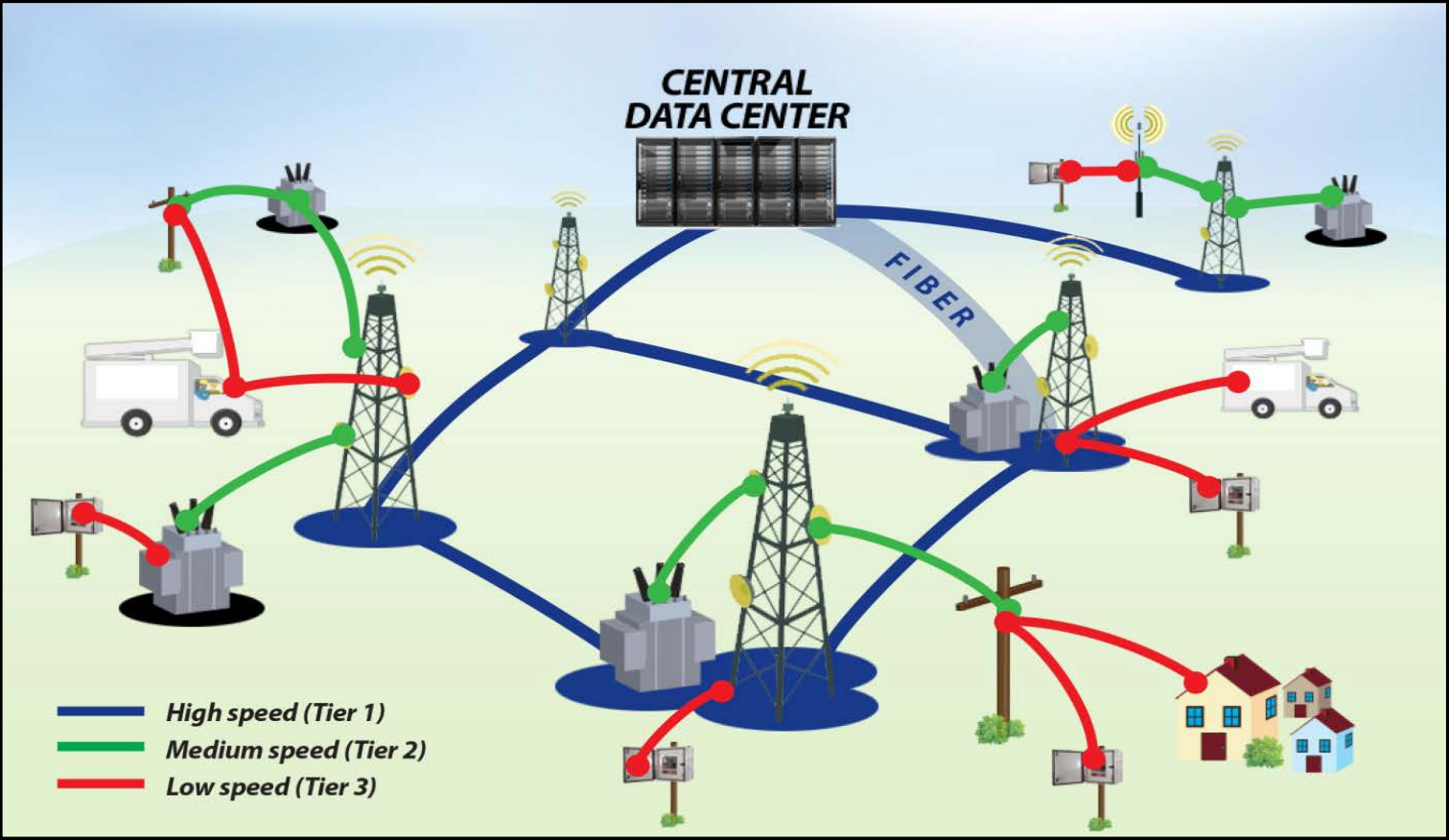
- Primary Line Sensors
- Fixed Capacitors Sensors
- Switched Capacitors
- Electronic Reclosers
- Voltage Monitors
- Voltage Regulators



Voltage Regulators



Network Strategy



DMS



Fault Location, Isolation, and Service Restoration (FLISR) Demo

[ALT.pptx](#)

Questions?

