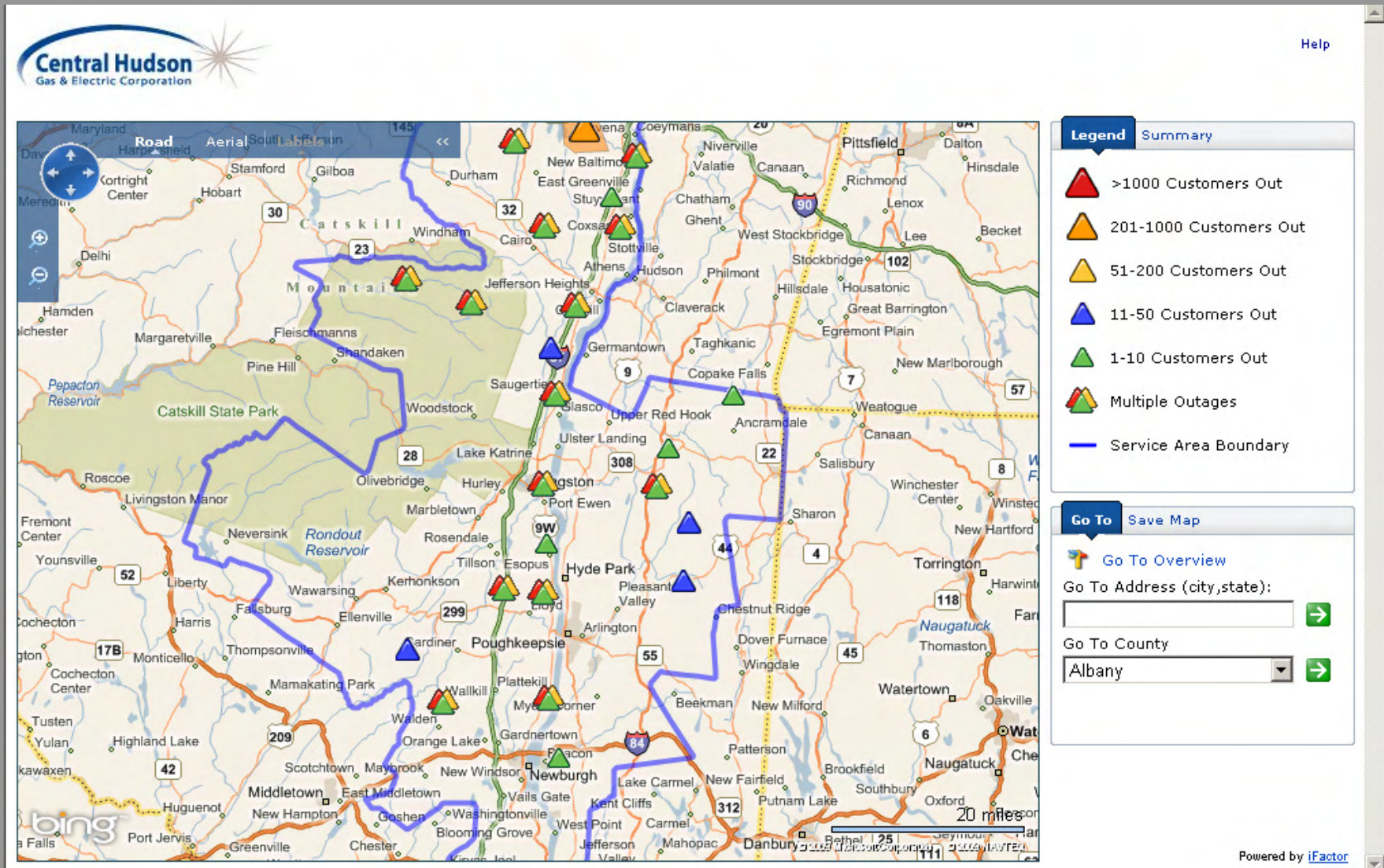




Providing you with another option to stay informed during storms and other emergencies.

Outage information is provided 24/7 with our online Outage Map. This map gives an overall geographical view of which communities are affected, the number of customers affected and the estimated restoration time when available.



Using your mouse pointer, hover over the triangle in your neighborhood.

A pop-up box will appear showing the number of customers affected and estimated restoration time, when available.

You can Zoom In to within one mile of a location for a better view.

Click on “Report Electric Service Problem/Check Status” to report a power loss or to check the status of an existing outage case.

You can also enter your address (street, city, state) in the Go To Address box at the bottom right of the screen to zoom in directly to your neighborhood, and save map for future reference.

The screenshot displays the Central Hudson Gas & Electric Corporation website interface. At the top left is the company logo. The main area is a map of the Newburgh, NY region, showing various streets and landmarks. A red triangle icon on the map indicates a power outage. A pop-up box is visible over this icon, containing the following text:

Customers Affected: 1028
Estimated Restoration: Restoration information is not yet available.
[Zoom In](#)
[Report Electric Service Problem / Check Status](#)

On the right side of the map, there is a 'Legend' panel with the following items:

- >1000 Customers Out (Red triangle)
- 201-1000 Customers Out (Orange triangle)
- 51-200 Customers Out (Yellow triangle)
- 11-50 Customers Out (Blue triangle)
- 1-10 Customers Out (Green triangle)
- Multiple Outages (Multi-colored triangle)
- Service Area Boundary (Blue line)

Below the legend is a 'Go To' panel with a 'Save Map' button. It includes a 'Go To Overview' button, a 'Go To Address (city,state):' input field, and a 'Go To County' dropdown menu currently set to 'Albany'. A scale bar at the bottom right of the map indicates 2.5 miles.

Highlight the Summary tab then click on Outages by County to see the total number of Customers Affected and the overall Estimated Restoration Time for each County.

Estimated restoration times may not be available immediately after outages occur, especially during storm events when crews need to assess the damage and determine the necessary repairs and resources required to restore power. Estimated restoration times are posted as soon as they become available.

Central Hudson Gas & Electric Corporation

Customers Affected By County

This screen provides a summary of outage information for each county served by Central Hudson. Click on the + sign to expand the selection to all municipalities within each county. The Estimated Restoration Times provided are an estimate of when electric service will be restored for the majority of customers in the municipality or county. Because individual outages may be restored sooner than the estimated time shown, while some isolated cases may take longer to restore, customers are encouraged to [click here](#) to check on the status of a specific outage, or use the Go To Address function below.

County (State)	Customers Affected	Customers Served	Estimated Restoration
+ Albany	701	6217	Pending
+ Columbia	6	1530	Pending
+ Dutchess	79	113638	Sep 2, 1:00 PM
- Greene	9395	27685	Aug 26, 2:00 PM
Athens	804	1392	Not yet available
Athens Village	88	984	Not yet available
Cairo	789	4037	Not yet available
Catskill	1732	4444	Aug 26, 2:00 PM
Not yet available			Not yet available

Summary

Outages by County

Active Outages: 93
Affected Customers: 10531
Last Updated: Sep 2, 1:15 PM

**Information is updated every 15 minutes.*

Go To Save Map

Go To Overview

Go To Address (city,state):

Go To County: Albany

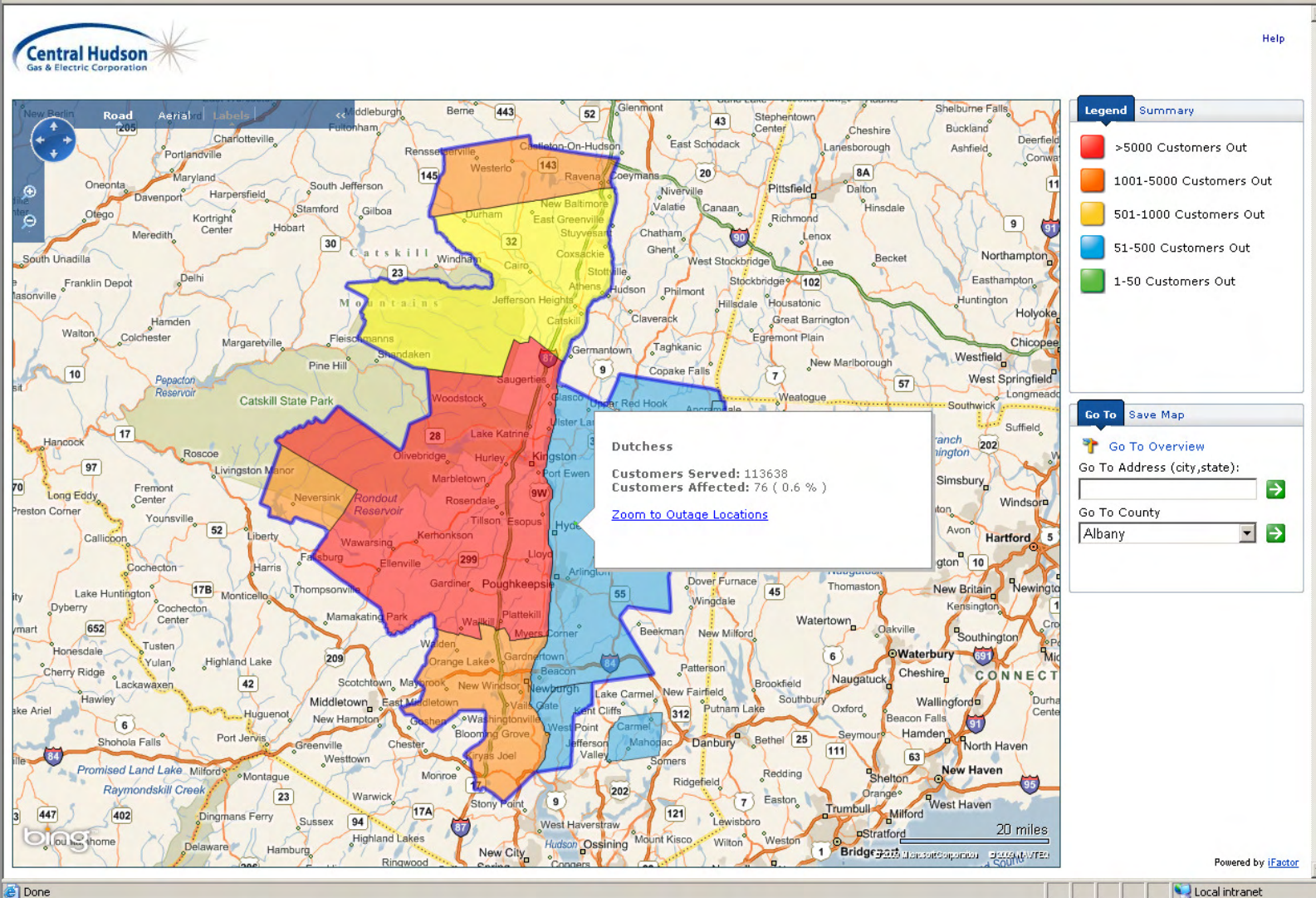
Powered by iFactor

Click on the + sign to see individual townships.

This time is the latest estimated restoration time for those outages that have been assessed.

During a storm event with more than 100 reported outage locations, the map will show a *thematic* view of our service territory. Each county will be shaded indicating the total number of customers affected.

Zoom in to within 2.5 miles on the map to see the color-coded outage symbols for individual outage information.

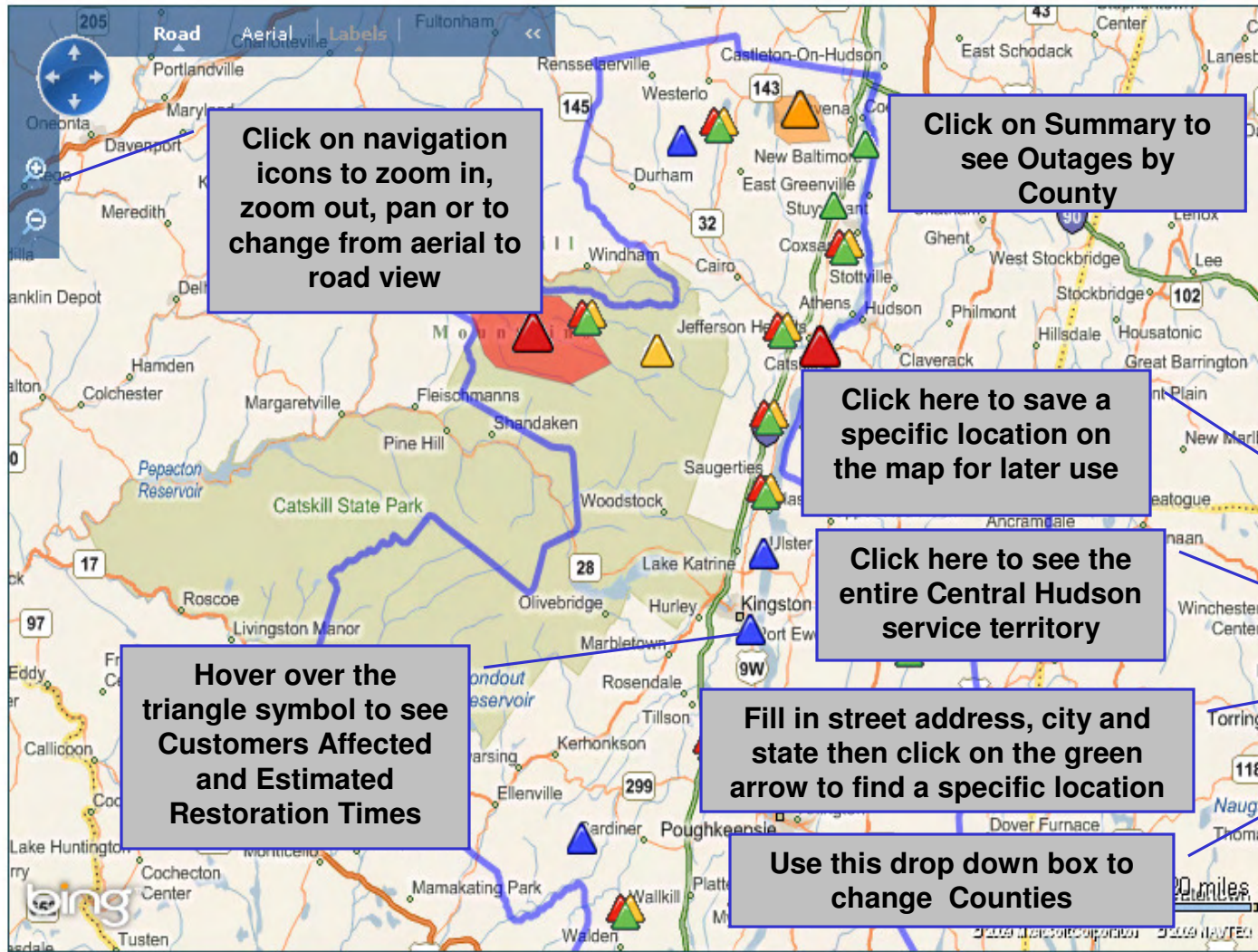


Summary of StormCentral



StormCentral updates every 15 Minutes

Help



Click on navigation icons to zoom in, zoom out, pan or to change from aerial to road view

Click on Summary to see Outages by County

Click here to save a specific location on the map for later use

Click here to see the entire Central Hudson service territory

Hover over the triangle symbol to see Customers Affected and Estimated Restoration Times

Fill in street address, city and state then click on the green arrow to find a specific location

Use this drop down box to change Counties

Legend Summary

- >1000 Customers Out
- 201-1000 Customers Out
- 51-200 Customers Out
- 11-50 Customers Out
- 1-10 Customers Out
- Multiple Outages
- Service Area Boundary

Go To Save Map

Go To Overview

Go To Address (city,state): →

Go To County →